

## Microsoft® Business Solutions Manufacturing–Great Plains®

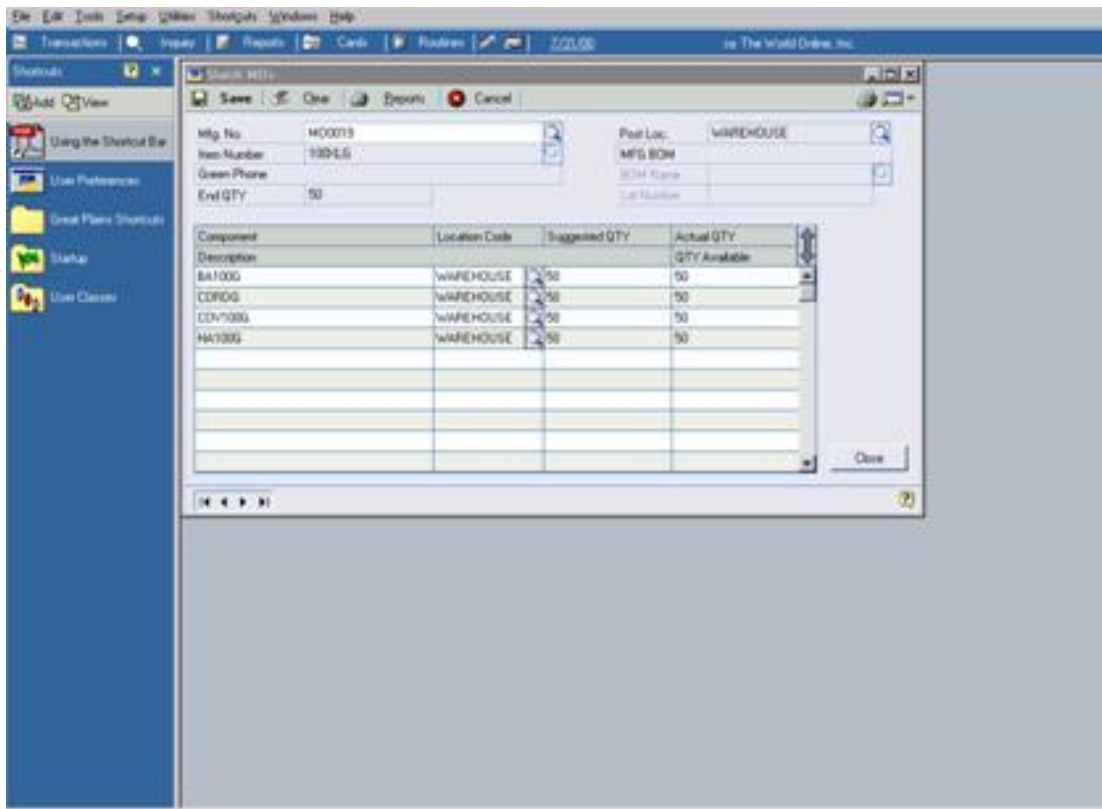


### Manufacturing Order Processing

The Manufacturing Orders module acts as the nerve center for production. Production requests from sales orders, material requirements planning, the master production schedule and manually entered orders all can be used to initiate production, making Manufacturing Orders a powerful tool for shops using make-to-order, make-to-stock and assemble-to-order manufacturing processes.

Manufacturing orders are easy to generate using Microsoft Business Solutions. With just a few entries your order is scheduled and a picklist has been created for you. Not all manufacturing orders are ready to move to production when you create them; you can designate each order as a quote/estimate, open, released, hold or cancel. Resources and costs for labor, machines and material are calculated immediately as the order is processed; this information can be compared to actual resources used and cost incurred at the end of the production process to identify inefficiencies in production. Starting and ending quantity information can be tracked for materials, making it easier to account for shrinkage during the production cycle.

In addition, the Manufacturing Orders Calendar enables you to view production activity by work center or manufacturing order for a range of dates you specify, making it easy to identify bottlenecks or areas of excess capacity that could be used more efficiently or to expedite other orders. And when circumstances change, as they often do, you can use batch scheduling and rescheduling of manufacturing orders to update your production schedules quickly and easily.



Quick MOs allows you to quickly create and close Manufacturing Orders for items that have already been produced and to backflush material and labor usage. They can easily be used in an environment that requires “workorderless” manufacturing.

If you operate in an environment where goods are produced so quickly that you don’t have the opportunity to create a manufacturing order until after the manufacturing process has been completed, Quick MOs will allow you to set up a manufacturing order with a few mouse clicks and backflush all the resources that went in to producing that order. You can also use Quick MOs in an environment, such as a lean shop, where workorderless manufacturing is desired.

As more and more manufacturers focus on their core competencies, the need to handle outsourced processes is increasing. Manufacturers who outsource the manufacturing of specific operations or services will be able to define, cost and track production work performed by a vendor.

Users can identify a work center as being “outsourced” so that the outsourced vendor can be incorporated into the routing. The system suggests purchase orders, WIP shipments, and raw material shipments, and users can generate a purchase order for a single manufacturing order or for a range of manufacturing orders per vendor. When the purchase order is received and invoiced, the cost is applied to the manufacturing order. Additional charges, such as freight, can be optionally included. The outsourcing functionality will also apply landed costs that may have been entered for the purchase receipt and invoice.

## Key Features

- Manufacturing orders can be generated by the master production schedule, material requirements plan, or sales order activity, allowing this module to be the focal point of all manufacturing activity in the system.
- Various status choices allow for flexible control over all orders. Choose from quote/estimate, open, released, hold or cancel.
- This module includes both starting and ending quantity information, allowing for shrinkage factors to be accounted for as orders are created.
- The manufacturing order calendar views production activity by work center or manufacturing order of a user-specified date range for easy visibility of production activity.
- Generated picklists and manufacturing order routings can be edited "on-the-fly" to accommodate special production considerations.
- Estimated labor, machine, and material resources, including costs, are immediately calculated for each order that is processed. These estimated resources and costs can be compared in the Job Costing module.
- It includes facilities for batch scheduling/rescheduling of manufacturing orders and allows for easy regeneration of any part of your schedule when necessary. Portions of an order can be rescheduled easily.

*© 2002 Microsoft Corporation and Great Plains Software, Inc. All rights reserved. Microsoft, Microsoft Business Solutions and Great Plains are either registered trademarks or trademarks of Microsoft Corporation, Great Plains Software, Inc. or Microsoft Business Solutions Corporation in the United States and/or other countries. Both, Great Plains Software Inc. and Microsoft Business Solutions Corporation are wholly-owned subsidiaries of Microsoft Corporation. Functionality described herein may not be available on all versions of Microsoft Business Solutions—Great Plains products. The names of actual companies and products mentioned herein may be the trademarks of their respective owners.*